



NATA LIGHTING CO.,LTD.  
www.nata.cn  
Email:info@nata.com  
Tel:+86-750-3770000 Fax:+86-750-3771111  
Address:380JinOu Road,GaoXin Zone,Jiang Men City,Guangdong,China

NT

Client:

LumCAT: 2-2681-L

Luminaire: 92.70.412.00

Report No: 2024226-B017

Ballast type: AC

Test No: 2024226-C017

Voltage(V): 36.030

LampCAT: P2141-036-1206-P3090-1

Current(A): 0.701

Lamp flux(lm): 3301.0

Power (W): 25.257

Number of Lamps: 1

PF: 0.000

Length(mm): 0

Width(mm): 0

Phm Type: C

Height(mm): 0

### Photometric Results

Lumens(lm): 2711.69, Efficiency(%): 82.15% , Luminous Efficacy(lm/W): 107.36

Central intensity(cd): 4937.894, Maximum intensity(cd): 4937.894

Angle of maximum intensity: C=0.0  $\gamma$ =0.0

Beam Angle(50%Imax): [C0/180]Total=43.8

[C90/270]Total=43.8

Field angle(10%Imax): [C0/180]Total=68.0

[C90/270]Total=68.0

Maximum s/h(1/2): C0\_180=0.70 C90\_270=0.70

Maximum s/h(1/4): C0\_180=0.69 C90\_270=0.69

Up flux rate of lamp(%): 0.00%

Down flux rate of lamp(%): 82.15%

Up flux rate of LUM(%): - -

Down flux rate of LUM(%): 100.00%

CIE Type : Direct lighting

Output flux ratio in  $\pi$  solid angle : 97.622%

Equipment: GMS1980  
Temperature(°C): 25.0

Date: 2024/2/26  
Humidity(%): 60.0%

Operator: NT07  
Distance(m): 7.65

$\gamma(^{\circ})$	Average I(cd)	Zonal F(lm)	Sum F(lm)	Eff Flux(%)	Eff Sum(%)
0.0	4937.894	0.000	0	0.00%	0.00%
1.0	4932.115	4.723	4.723	0.14%	0.17%
2.0	4911.632	14.129	18.851	0.43%	0.70%
3.0	4879.006	23.416	42.267	0.71%	1.56%
4.0	4830.140	32.500	74.767	0.98%	2.76%
5.0	4772.861	41.312	116.079	1.25%	4.28%
6.0	4704.829	49.808	165.886	1.51%	6.12%
7.0	4623.263	57.899	223.786	1.75%	8.25%
8.0	4530.651	65.513	289.298	1.98%	10.67%
9.0	4430.943	72.629	361.927	2.20%	13.35%
10.0	4319.970	79.193	441.12	2.40%	16.27%
11.0	4207.826	85.210	526.33	2.58%	19.41%
12.0	4080.467	90.603	616.933	2.74%	22.75%
13.0	3942.500	95.212	712.145	2.88%	26.26%
14.0	3804.679	99.163	811.309	3.00%	29.92%
15.0	3662.909	102.518	913.827	3.11%	33.70%
16.0	3508.702	105.084	1018.911	3.18%	37.57%
17.0	3342.278	106.688	1125.599	3.23%	41.51%
18.0	3170.222	107.377	1232.976	3.25%	45.47%
19.0	2999.556	107.342	1340.318	3.25%	49.43%
20.0	2818.136	106.480	1446.798	3.23%	53.35%
21.0	2625.232	104.524	1551.321	3.17%	57.21%
22.0	2441.398	101.816	1653.138	3.08%	60.96%
23.0	2278.120	99.028	1752.166	3.00%	64.62%
24.0	2092.092	95.549	1847.714	2.89%	68.14%
25.0	1924.059	91.318	1939.033	2.77%	71.51%
26.0	1707.313	85.719	2024.752	2.60%	74.67%
27.0	1520.041	78.958	2103.71	2.39%	77.58%
28.0	1320.685	71.921	2175.631	2.18%	80.23%
29.0	1197.787	65.890	2241.521	2.00%	82.66%
30.0	1054.480	60.811	2302.332	1.84%	84.90%
31.0	900.976	54.418	2356.749	1.65%	86.91%
32.0	758.569	47.544	2404.293	1.44%	88.66%
33.0	624.559	40.747	2445.041	1.23%	90.17%
34.0	496.190	33.917	2478.958	1.03%	91.42%
35.0	391.991	27.584	2506.542	0.84%	92.43%
36.0	299.935	22.031	2528.573	0.67%	93.25%
37.0	246.241	17.813	2546.386	0.54%	93.90%

$\gamma(^{\circ})$	Average I(cd)	Zonal F(lm)	Sum F(lm)	Eff Flux(%)	Eff Sum(%)
38.0	170.169	13.899	2560.285	0.42%	94.42%
39.0	119.583	9.890	2570.175	0.30%	94.78%
40.0	78.128	6.895	2577.071	0.21%	95.04%
41.0	65.055	5.099	2582.169	0.15%	95.22%
42.0	57.937	4.469	2586.638	0.14%	95.39%
43.0	53.343	4.122	2590.76	0.12%	95.54%
44.0	49.854	3.895	2594.655	0.12%	95.68%
45.0	47.374	3.737	2598.392	0.11%	95.82%
46.0	45.245	3.622	2602.014	0.11%	95.96%
47.0	43.490	3.529	2605.543	0.11%	96.09%
48.0	42.005	3.456	2608.999	0.10%	96.21%
49.0	40.717	3.397	2612.396	0.10%	96.34%
50.0	39.525	3.346	2615.742	0.10%	96.46%
51.0	38.464	3.300	2619.041	0.10%	96.58%
52.0	37.498	3.260	2622.301	0.10%	96.70%
53.0	36.628	3.224	2625.525	0.10%	96.82%
54.0	35.772	3.191	2628.716	0.10%	96.94%
55.0	34.989	3.159	2631.875	0.10%	97.06%
56.0	34.287	3.130	2635.005	0.09%	97.17%
57.0	33.533	3.101	2638.106	0.09%	97.29%
58.0	32.809	3.068	2641.174	0.09%	97.40%
59.0	32.078	3.033	2644.208	0.09%	97.51%
60.0	31.346	2.996	2647.204	0.09%	97.62%
61.0	30.651	2.959	2650.163	0.09%	97.73%
62.0	29.964	2.921	2653.083	0.09%	97.84%
63.0	29.225	2.879	2655.962	0.09%	97.95%
64.0	28.464	2.831	2658.793	0.09%	98.05%
65.0	27.754	2.782	2661.575	0.08%	98.15%
66.0	26.964	2.730	2664.305	0.08%	98.25%
67.0	26.182	2.672	2666.977	0.08%	98.35%
68.0	25.443	2.615	2669.593	0.08%	98.45%
69.0	24.835	2.565	2672.158	0.08%	98.54%
70.0	24.228	2.520	2674.677	0.08%	98.64%
71.0	23.672	2.476	2677.153	0.08%	98.73%
72.0	22.912	2.422	2679.575	0.07%	98.82%
73.0	22.136	2.356	2681.931	0.07%	98.90%
74.0	21.258	2.281	2684.212	0.07%	98.99%
75.0	20.300	2.196	2686.408	0.07%	99.07%

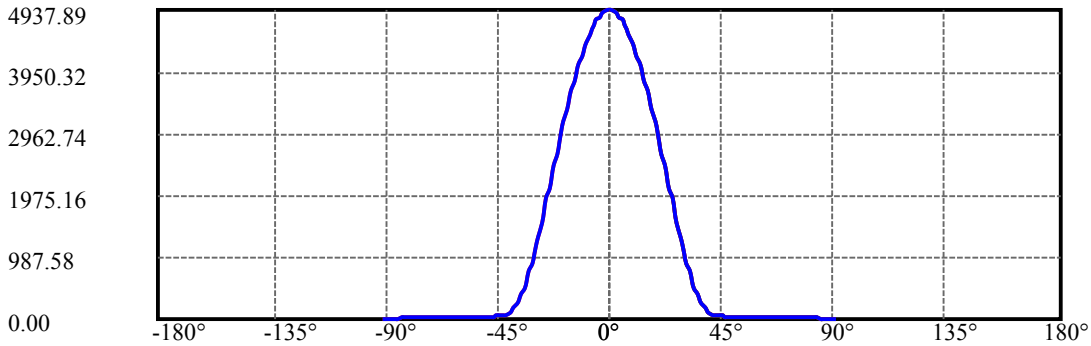
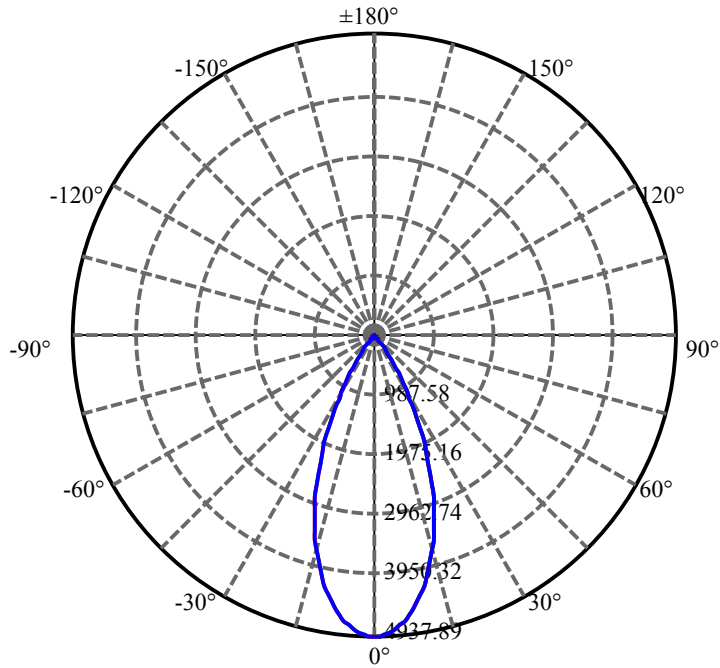
$\gamma(^{\circ})$	Average I(cd)	Zonal F(lm)	Sum F(lm)	Eff Flux(%)	Eff Sum(%)
76.0	19.561	2.116	2688.524	0.06%	99.15%
77.0	18.910	2.051	2690.575	0.06%	99.22%
78.0	18.376	1.996	2692.571	0.06%	99.30%
79.0	17.805	1.944	2694.515	0.06%	99.37%
80.0	17.345	1.895	2696.41	0.06%	99.44%
81.0	16.906	1.852	2698.262	0.06%	99.50%
82.0	16.386	1.805	2700.068	0.05%	99.57%
83.0	15.640	1.741	2701.809	0.05%	99.64%
84.0	14.594	1.647	2703.456	0.05%	99.70%
85.0	13.489	1.533	2704.989	0.05%	99.75%
86.0	12.641	1.428	2706.417	0.04%	99.81%
87.0	12.187	1.359	2707.776	0.04%	99.86%
88.0	11.924	1.321	2709.097	0.04%	99.90%
89.0	11.800	1.300	2710.397	0.04%	99.95%
90.0	11.734	1.290	2711.687	0.04%	100.00%

ZONAL LUMEN SUMMARY

Zone	Lumens	%Lamp	%Fixt
0-30	2302.33	69.75%	84.90%
0-40	2577.07	78.07%	95.04%
0-60	2647.20	80.19%	97.62%
0-90	2710.40	82.11%	99.95%
0-120	2710.40	82.11%	99.95%
0-180	2711.69	82.15%	100.00%
60-90	63.19	1.91%	2.33%
90-120	0.00	0.00%	0.00%
90-130	0.00	0.00%	0.00%
90-150	0.00	0.00%	0.00%
90-180	0.00	0.00%	0.00%
0-27.91	2169.35	65.72%	80.00%

ZONAL LUMEN SUMMARY

0-10	441.12
10-20	1005.68
20-30	855.53
30-40	274.74
40-50	38.67
50-60	31.46
60-70	27.47
70-80	21.73
80-90	13.99
90-100	0.00
100-110	0.00
110-120	0.00
120-130	0.00
130-140	0.00
140-150	0.00
150-160	0.00
160-170	0.00
170-180	0.00



C0(Max): —————

C0/C180: —————

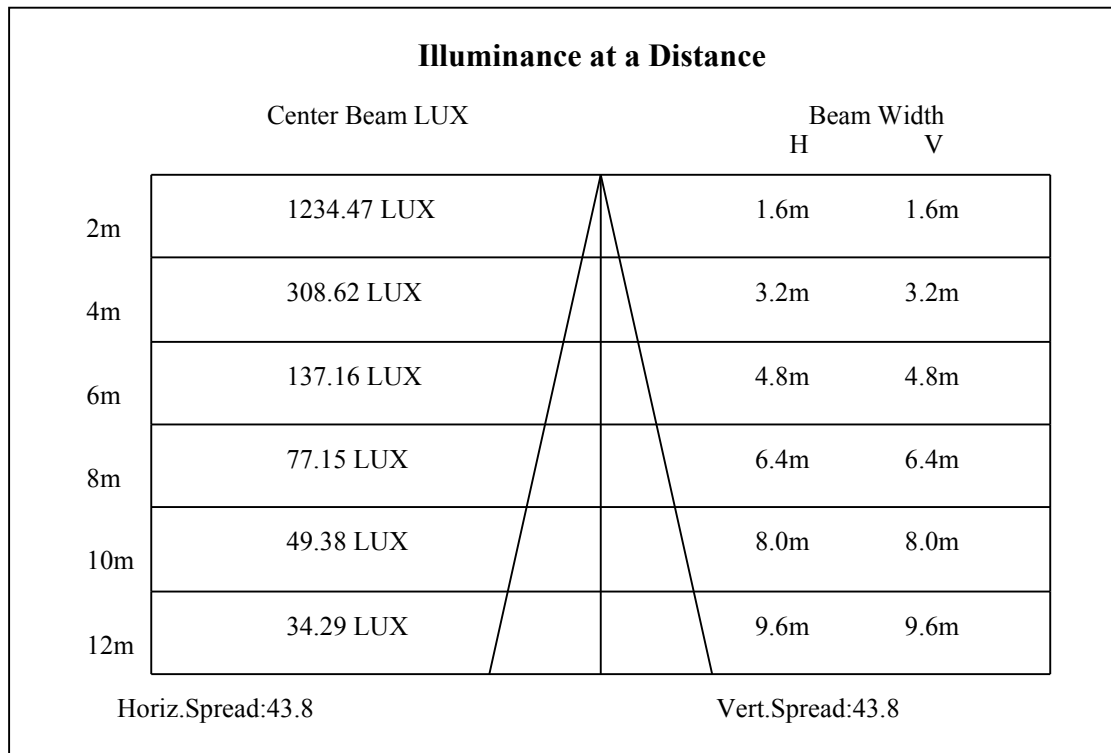
C90/C270: —————

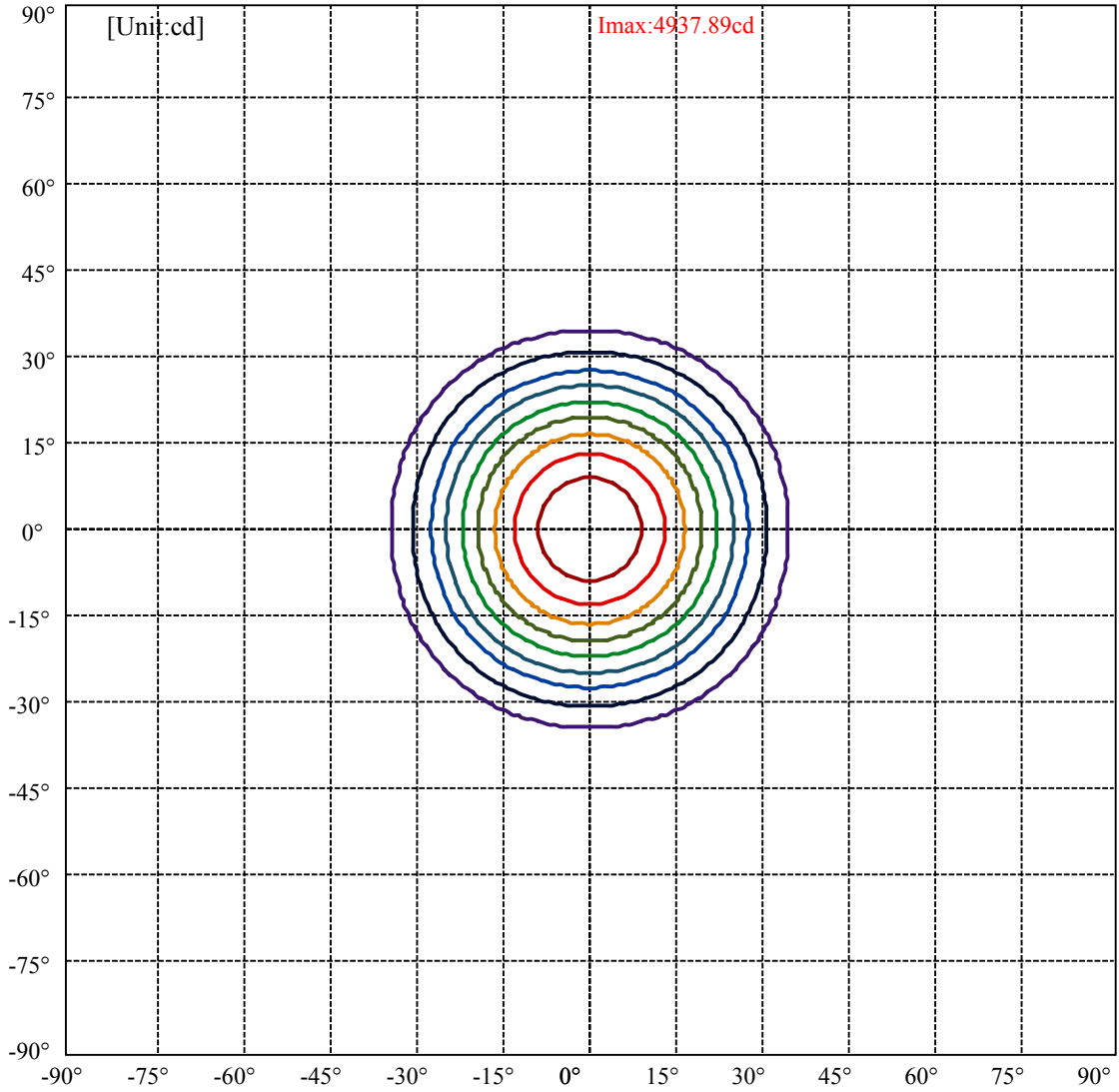
Field angle(10%Imax):C0/180Left:34.0 Right:34.0

:C90/270Left:34.0 Right:34.0

Beam Angle(50%Imax):C0/180Left:21.9 Right:21.9

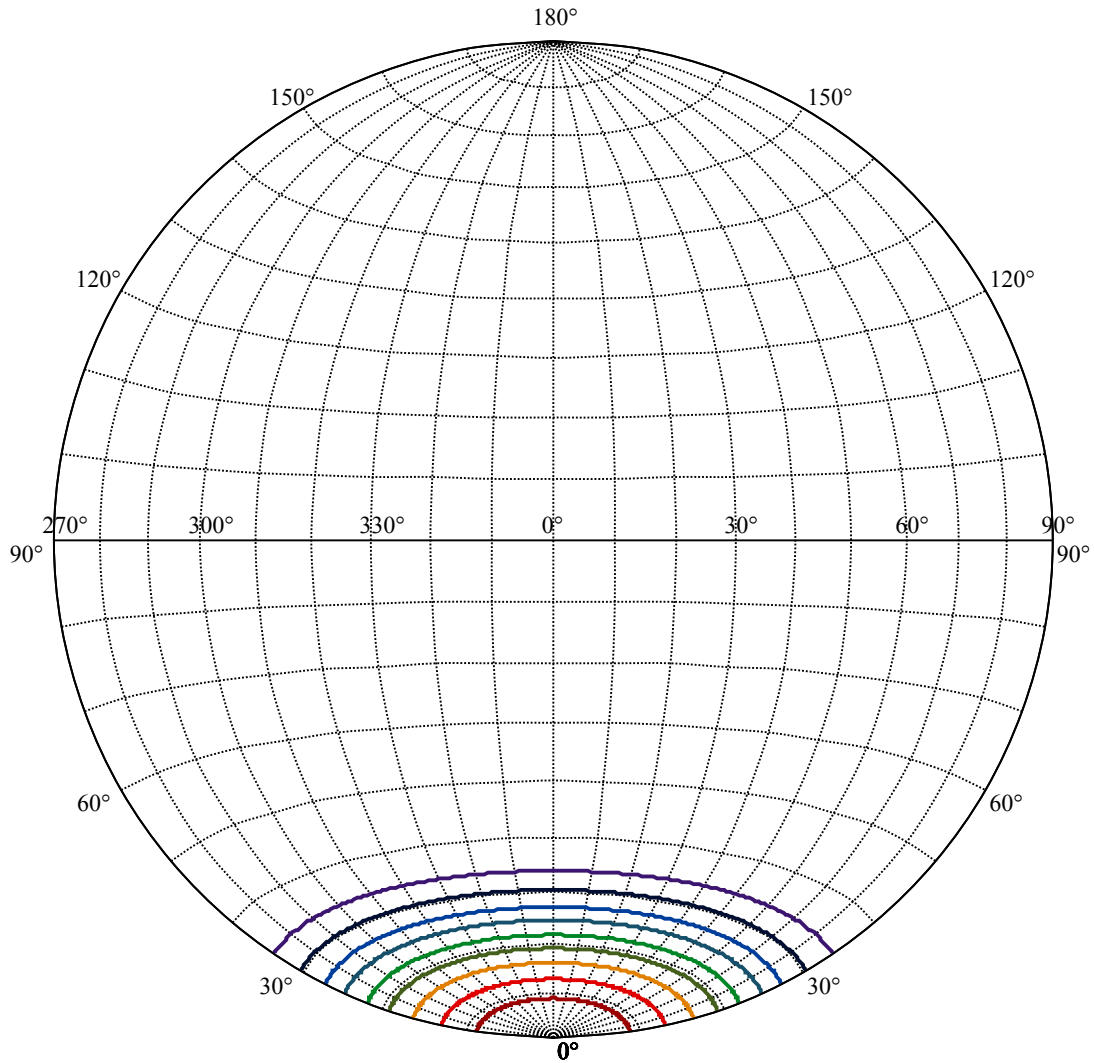
:C90/270Left:21.9 Right:21.9





(10%I <sub>max</sub> ) 493.789	—
(20%I <sub>max</sub> ) 987.579	—
(30%I <sub>max</sub> ) 1481.37	—
(40%I <sub>max</sub> ) 1975.16	—
(50%I <sub>max</sub> ) 2468.95	—
(60%I <sub>max</sub> ) 2962.74	—
(70%I <sub>max</sub> ) 3456.53	—
(80%I <sub>max</sub> ) 3950.32	—
(90%I <sub>max</sub> ) 4444.1	—





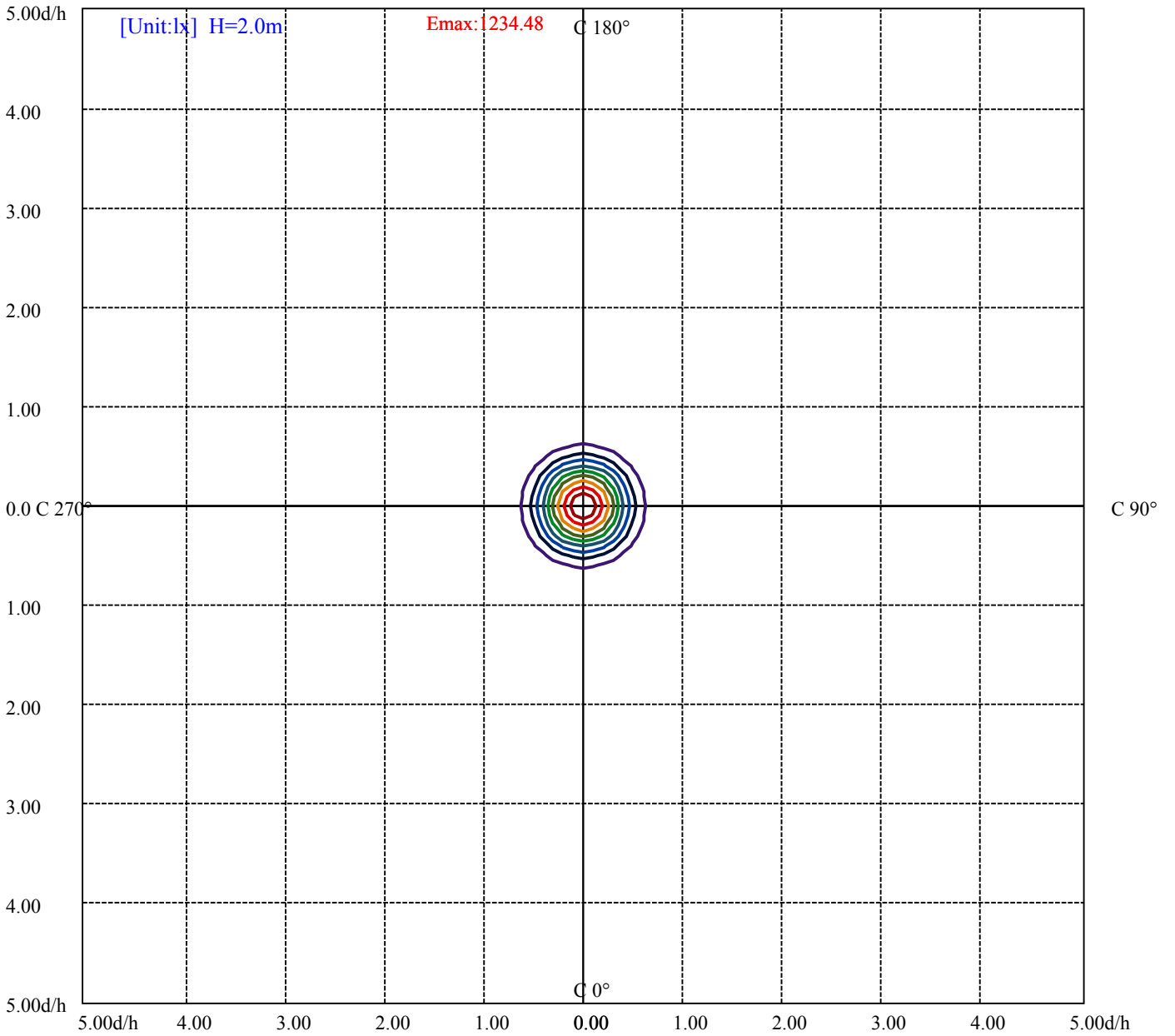
House

[Unit:cd]

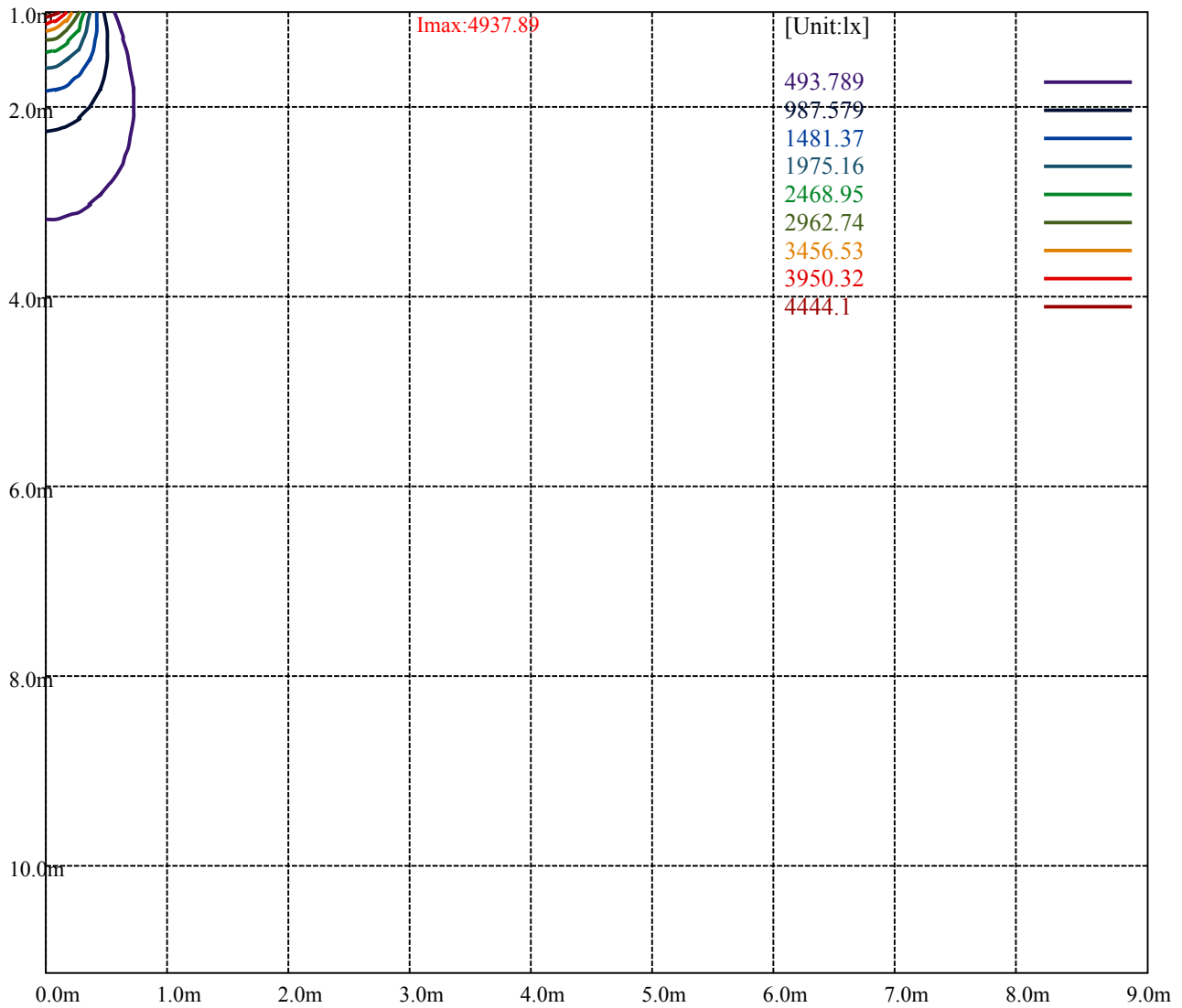
Road

**I<sub>max</sub>:4937.89**

(10%I <sub>max</sub> ) 493.789	—
(20%I <sub>max</sub> ) 987.579	—
(30%I <sub>max</sub> ) 1481.37	—
(40%I <sub>max</sub> ) 1975.16	—
(50%I <sub>max</sub> ) 2468.95	—
(60%I <sub>max</sub> ) 2962.74	—
(70%I <sub>max</sub> ) 3456.53	—
(80%I <sub>max</sub> ) 3950.32	—
(90%I <sub>max</sub> ) 4444.1	—



(10%Emax)	123.4473	—
(20%Emax)	246.8947	—
(30%Emax)	370.3425	—
(40%Emax)	493.79	—
(50%Emax)	617.2375	—
(60%Emax)	740.685	—
(70%Emax)	864.1325	—
(80%Emax)	987.5775	—
(90%Emax)	1111.025	—



Luminance Table

$\gamma$	45	50	55	60	65	70	75	80	85
C0	0	0	0	0	0	0	0	0	0
C45	0	0	0	0	0	0	0	0	0
C90	0	0	0	0	0	0	0	0	0

L(Hor)(65)	L(Ver)(65)	L45(65)	L(Hor)(75)	L(Ver)(75)	L45(75)	L(Hor)(85)	L(Ver)(85)	L45(85)
0	0	0	0	0	0	0	0	0

Glare Table

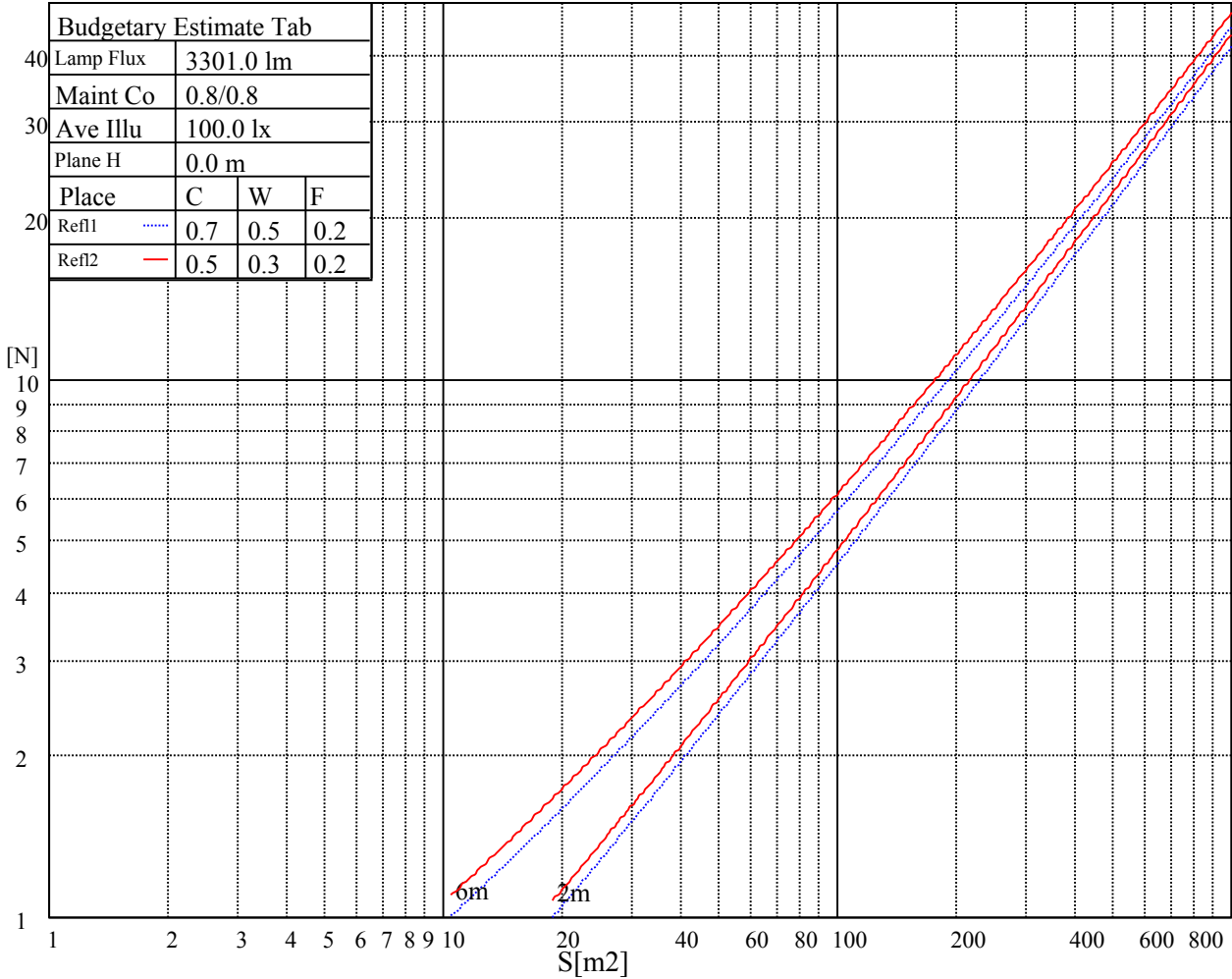
Glare	Quality	Service Values Illuminance(lx)							
1.15	A	2000	1000	500	<=300				
1.5	B		2000	1000	500	<=300			
1.85	C			2000	1000	500	<=300		
2.2	D				2000	1000	500	<=300	
2.55	E					2000	1000	500	<=300
		a	b	c	d	e	f	g	h

Luminance Limiting Curve

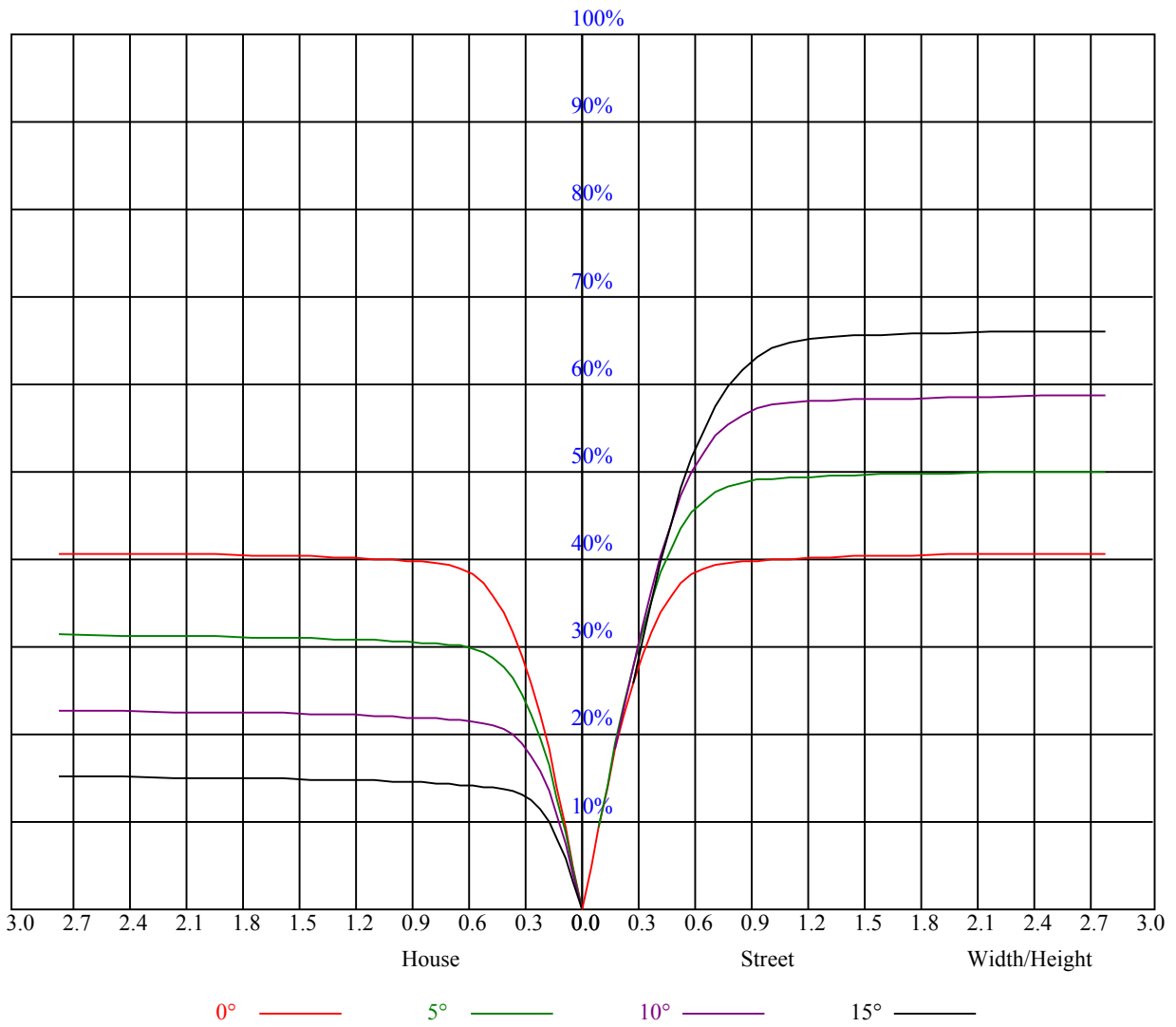


Illumination assessment according UGR											
Rf of Ceiling	70	70	50	50	30	70	70	50	50	30	
Rf of Wall	50	30	50	30	30	50	30	50	30	30	
Rf of Floor	20	20	20	20	20	20	20	20	20	20	
Room dimensions		Viewed crosswise					Viewed endwise				
X	Y										
2H	2H	非数字	非数字	非数字	非数字	非数字	非数字	非数字	非数字	非数字	
	3H	非数字	非数字	非数字	非数字	非数字	非数字	非数字	非数字	非数字	
	4H	非数字	非数字	非数字	非数字	非数字	非数字	非数字	非数字	非数字	
	6H	非数字	非数字	非数字	非数字	非数字	非数字	非数字	非数字	非数字	
	8H	非数字	非数字	非数字	非数字	非数字	非数字	非数字	非数字	非数字	
	12H	非数字	非数字	非数字	非数字	非数字	非数字	非数字	非数字	非数字	
4H	2H	非数字	非数字	非数字	非数字	非数字	非数字	非数字	非数字	非数字	
	3H	非数字	非数字	非数字	非数字	非数字	非数字	非数字	非数字	非数字	
	4H	非数字	非数字	非数字	非数字	非数字	非数字	非数字	非数字	非数字	
	6H	非数字	非数字	非数字	非数字	非数字	非数字	非数字	非数字	非数字	
	8H	非数字	非数字	非数字	非数字	非数字	非数字	非数字	非数字	非数字	
8H	12H	非数字	非数字	非数字	非数字	非数字	非数字	非数字	非数字	非数字	
	4H	非数字	非数字	非数字	非数字	非数字	非数字	非数字	非数字	非数字	
	6H	非数字	非数字	非数字	非数字	非数字	非数字	非数字	非数字	非数字	
	8H	非数字	非数字	非数字	非数字	非数字	非数字	非数字	非数字	非数字	
12H	12H	非数字	非数字	非数字	非数字	非数字	非数字	非数字	非数字	非数字	
	4H	非数字	非数字	非数字	非数字	非数字	非数字	非数字	非数字	非数字	
	6H	非数字	非数字	非数字	非数字	非数字	非数字	非数字	非数字	非数字	
	8H	非数字	非数字	非数字	非数字	非数字	非数字	非数字	非数字	非数字	
Variation with the observer position at spacings:											
S = 1.0H		非数字/非数字					非数字/非数字				
S = 1.5H		非数字/非数字					非数字/非数字				
S = 2.0H		非数字/非数字					非数字/非数字				
Standard tables:		BK0					BK0				
Uncorrected UGR		负无穷大					负无穷大				

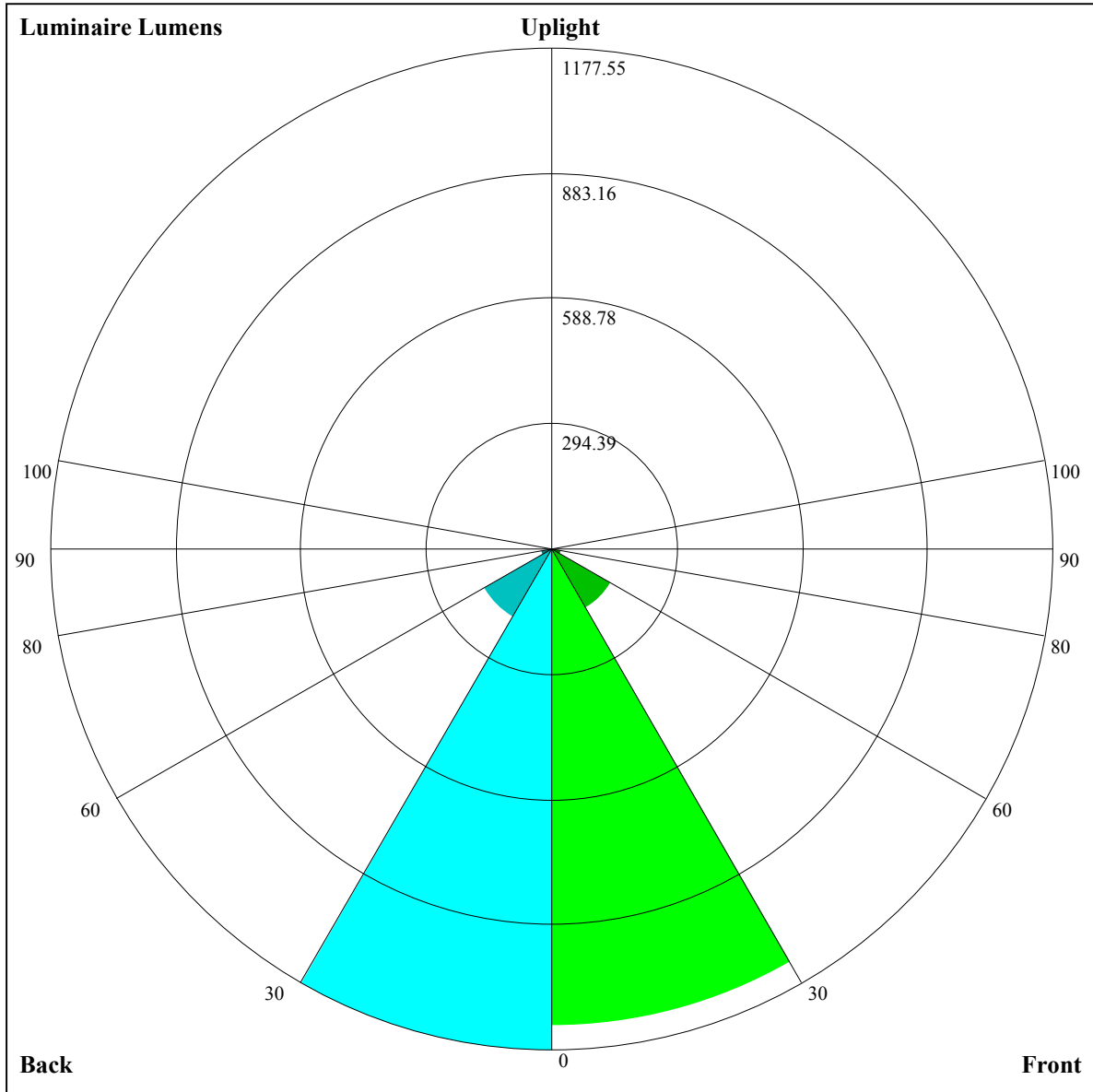
UGR calculation is based on CIE Publ. 117 ,S/H = 0.25



RHOCC	80			70			50			30			10			0
RHOW	50	30	10	50	30	10	50	30	10	50	30	10	50	30	10	0
RCR	COEFFICIENTS OF UTILIZATION RHOFC=20 CU															
0	0.98	0.98	0.98	0.96	0.96	0.96	0.91	0.91	0.91	0.87	0.87	0.87	0.84	0.84	0.84	0.82
1	0.91	0.89	0.87	0.89	0.88	0.86	0.86	0.85	0.83	0.83	0.82	0.81	0.80	0.79	0.79	0.77
2	0.85	0.82	0.80	0.84	0.81	0.79	0.81	0.79	0.77	0.79	0.77	0.75	0.77	0.75	0.74	0.73
3	0.80	0.77	0.74	0.79	0.76	0.73	0.77	0.74	0.72	0.75	0.73	0.71	0.73	0.71	0.70	0.69
4	0.76	0.72	0.69	0.75	0.71	0.68	0.73	0.70	0.67	0.72	0.69	0.67	0.70	0.68	0.66	0.65
5	0.72	0.68	0.64	0.71	0.67	0.64	0.70	0.66	0.64	0.69	0.65	0.63	0.67	0.65	0.63	0.61
6	0.68	0.64	0.61	0.68	0.64	0.61	0.67	0.63	0.60	0.65	0.62	0.60	0.64	0.62	0.59	0.58
7	0.65	0.61	0.58	0.65	0.60	0.57	0.64	0.60	0.57	0.63	0.59	0.57	0.62	0.59	0.57	0.55
8	0.62	0.58	0.55	0.62	0.57	0.55	0.61	0.57	0.54	0.60	0.57	0.54	0.59	0.56	0.54	0.53
9	0.59	0.55	0.52	0.59	0.55	0.52	0.58	0.54	0.52	0.57	0.54	0.52	0.57	0.54	0.51	0.50
10	0.57	0.52	0.50	0.56	0.52	0.50	0.56	0.52	0.49	0.55	0.52	0.49	0.55	0.51	0.49	0.48







Luminaire Lumens:

FL=1123.12,FM=162.21,FH=24.28,FVH=7.54

BL=1177.55,BM=187.2,BH=25.12,BVH=7.76

UL=0,UH=0

BUG Rating:B3-U0-G0

Intensity data(cd)

C/γ(°)	0.0	1.0	2.0	3.0	4.0	5.0	6.0	7.0	8.0
0.0	4917.70	4891.37	4854.50	4805.93	4728.09	4657.86	4579.44	4469.42	4368.76
45.0	4942.28	4932.92	4911.27	4867.37	4822.31	4764.96	4682.44	4606.95	4500.44
90.0	4939.36	4918.87	4876.74	4830.51	4773.74	4688.88	4612.22	4527.36	4431.97
135.0	4952.23	4948.14	4929.99	4891.37	4846.31	4790.13	4726.34	4652.60	4550.18
180.0	4917.70	4934.68	4937.02	4927.65	4900.73	4862.69	4815.88	4743.31	4671.91
225.0	4942.28	4937.60	4920.63	4892.54	4852.16	4798.90	4721.07	4645.57	4564.23
270.0	4939.36	4948.14	4939.94	4924.14	4883.76	4839.87	4786.61	4722.24	4626.85
315.0	4952.23	4945.21	4922.97	4892.54	4834.02	4779.59	4714.63	4618.65	4530.87
360.0	4917.70	4891.37	4854.50	4805.93	4728.09	4657.86	4579.44	4469.42	4368.76
C/γ(°)	9.0	10.0	11.0	12.0	13.0	14.0	15.0	16.0	17.0
0.0	4262.25	4118.87	3995.97	3865.47	3698.68	3558.23	3407.82	3248.64	3044.40
45.0	4403.29	4300.88	4190.85	4042.21	3916.38	3781.78	3641.33	3456.40	3297.80
90.0	4302.63	4192.61	4075.57	3949.74	3787.05	3647.77	3501.46	3347.55	3149.74
135.0	4459.47	4360.57	4226.55	4111.26	3957.35	3825.67	3686.39	3504.97	3352.81
180.0	4591.15	4479.96	4381.64	4275.71	4138.18	4021.14	3895.32	3762.47	3588.66
225.0	4450.11	4349.45	4242.94	4103.66	3983.10	3825.67	3692.83	3553.54	3404.90
270.0	4544.92	4454.79	4355.30	4219.53	4103.66	3983.10	3823.92	3685.81	3540.08
315.0	4433.72	4302.63	4193.78	4076.15	3955.59	3794.07	3654.20	3510.24	3359.84
360.0	4262.25	4118.87	3995.97	3865.47	3698.68	3558.23	3407.82	3248.64	3044.40
C/γ(°)	18.0	19.0	20.0	21.0	22.0	23.0	24.0	25.0	26.0
0.0	2874.68	2697.95	2524.13	2323.40	2170.66	2008.55	1793.19	1626.40	1134.28
45.0	3141.55	2977.68	2758.81	2582.07	2377.83	2220.99	2062.39	1846.44	1677.31
90.0	2984.71	2764.66	2585.58	2417.62	2220.40	2062.98	1896.19	1727.06	1517.55
135.0	3196.56	3033.28	2819.67	2638.84	2473.22	2312.28	2119.16	1952.95	1777.97
180.0	3441.77	3288.44	3131.01	2926.18	2743.01	2565.68	2362.03	2210.45	2056.54
225.0	3210.02	3044.40	2875.27	2698.53	2484.34	2323.40	2170.07	2014.40	1807.23
270.0	3355.15	3199.48	3037.96	2825.52	2640.01	2466.78	2262.54	2106.87	1945.93
315.0	3157.35	2990.56	2812.65	2589.68	2421.72	2264.29	2071.17	1907.89	1741.69
360.0	2874.68	2697.95	2524.13	2323.40	2170.66	2008.55	1793.19	1626.40	1134.28
C/γ(°)	27.0	28.0	29.0	30.0	31.0	32.0	33.0	34.0	35.0
0.0	1134.28	1097.18	953.98	788.24	659.90	545.37	440.21	320.06	236.14
45.0	1503.50	1336.13	1143.59	1000.21	858.00	730.42	581.19	469.99	374.60
90.0	1152.95	1152.95	1040.41	872.51	733.99	613.96	474.03	373.32	282.02
135.0	1565.54	1395.82	1237.81	1050.54	910.08	742.12	613.96	503.35	399.77
180.0	1854.05	1686.68	1520.47	1310.96	1151.20	1002.55	852.73	686.53	568.31
225.0	1640.44	1153.01	1153.01	1111.23	927.11	782.74	650.36	533.49	402.81
270.0	1775.05	1608.84	1398.16	1241.32	1085.65	904.23	762.02	602.26	491.65
315.0	1534.52	1134.87	1134.87	1060.84	881.88	747.16	621.98	480.53	380.63
360.0	1134.28	1097.18	953.98	788.24	659.90	545.37	440.21	320.06	236.14
C/γ(°)	36.0	37.0	38.0	39.0	40.0	41.0	42.0	43.0	44.0
0.0	165.09	110.96	76.25	66.72	57.88	53.14	49.80	46.76	44.71
45.0	304.38	304.38	125.41	81.87	68.94	61.33	54.43	50.68	48.05
90.0	186.92	131.97	90.24	69.64	62.09	56.12	52.14	48.63	46.47
135.0	303.21	303.21	138.58	93.64	73.62	63.03	56.94	52.67	49.04
180.0	457.70	359.97	314.32	314.32	120.50	81.00	69.47	62.03	55.54
225.0	308.06	230.81	163.45	101.19	78.24	69.00	60.45	55.95	52.79
270.0	386.89	316.08	316.08	136.94	93.69	74.73	64.32	58.29	54.13
315.0	287.23	212.55	137.00	92.35	70.05	62.09	55.95	51.73	48.11
360.0	165.09	110.96	76.25	66.72	57.88	53.14	49.80	46.76	44.71

Intensity data(cd)

C/γ(°)	45.0	46.0	47.0	48.0	49.0	50.0	51.0	52.0	53.0
0.0	43.01	41.49	39.97	38.86	37.92	36.99	35.99	35.29	34.65
45.0	45.35	43.60	42.02	40.67	39.21	38.22	37.34	36.52	35.58
90.0	44.65	43.07	41.32	40.15	38.86	37.92	37.10	36.17	35.46
135.0	46.82	44.42	42.90	41.49	40.26	38.86	37.92	37.04	36.11
180.0	52.14	49.04	46.94	45.24	43.66	42.02	40.85	39.68	38.62
225.0	49.80	47.81	46.12	44.24	42.96	41.67	40.56	39.21	38.27
270.0	51.21	48.40	46.47	44.48	43.13	41.84	40.44	39.44	38.45
315.0	46.00	44.13	42.19	40.91	39.74	38.68	37.51	36.64	35.87
360.0	43.01	41.49	39.97	38.86	37.92	36.99	35.99	35.29	34.65
C/γ(°)	54.0	55.0	56.0	57.0	58.0	59.0	60.0	61.0	62.0
0.0	33.83	33.18	32.60	31.78	31.19	30.37	29.73	29.14	28.44
45.0	34.94	34.12	33.53	32.89	32.13	31.54	30.84	30.14	29.50
90.0	34.82	33.94	33.36	32.71	32.13	31.31	30.61	29.96	29.26
135.0	35.41	34.70	34.00	33.24	32.54	31.89	31.08	30.37	29.79
180.0	37.45	36.58	35.82	35.05	34.18	33.47	32.66	31.95	31.25
225.0	37.34	36.46	35.52	34.76	34.00	33.12	32.42	31.54	30.78
270.0	37.40	36.58	35.76	34.88	34.00	33.30	32.66	32.01	31.19
315.0	35.00	34.35	33.71	32.95	32.30	31.60	30.78	30.08	29.50
360.0	33.83	33.18	32.60	31.78	31.19	30.37	29.73	29.14	28.44
C/γ(°)	63.0	64.0	65.0	66.0	67.0	68.0	69.0	70.0	71.0
0.0	27.80	26.98	26.28	25.57	24.64	23.88	23.17	22.24	21.54
45.0	28.79	28.15	27.56	26.74	26.04	25.40	24.87	24.46	24.11
90.0	28.38	27.74	27.04	26.16	25.69	25.16	24.93	24.70	24.23
135.0	28.97	28.27	27.62	26.69	26.04	25.28	24.58	23.70	22.94
180.0	30.43	29.79	29.09	28.38	27.45	26.69	25.98	25.28	24.40
225.0	30.08	29.14	28.38	27.62	26.80	25.93	25.34	24.93	24.64
270.0	30.49	29.73	28.85	28.09	27.10	26.34	25.63	25.28	25.05
315.0	28.85	27.92	27.21	26.45	25.69	24.87	24.17	23.23	22.47
360.0	27.80	26.98	26.28	25.57	24.64	23.88	23.17	22.24	21.54
C/γ(°)	72.0	73.0	74.0	75.0	76.0	77.0	78.0	79.0	80.0
0.0	20.42	19.72	19.14	18.67	18.08	17.67	17.21	16.68	16.09
45.0	23.23	22.47	21.07	20.25	19.31	18.73	18.02	17.56	17.15
90.0	23.00	21.48	20.54	19.37	18.55	18.14	17.73	17.38	17.09
135.0	22.18	21.42	20.37	19.66	19.20	18.55	18.08	17.62	17.26
180.0	23.70	22.94	22.00	21.19	20.19	19.61	19.20	18.79	18.20
225.0	24.17	23.58	22.94	21.59	20.83	19.96	19.08	18.32	17.91
270.0	24.87	24.70	24.11	22.41	21.65	20.54	19.96	18.79	18.20
315.0	21.71	20.78	19.90	19.25	18.67	18.08	17.73	17.32	16.85
360.0	20.42	19.72	19.14	18.67	18.08	17.67	17.21	16.68	16.09
C/γ(°)	81.0	82.0	83.0	84.0	85.0	86.0	87.0	88.0	89.0
0.0	15.74	15.22	14.22	13.23	12.47	12.11	11.88	11.70	11.76
45.0	16.74	16.21	15.57	14.22	13.23	12.29	12.06	11.82	11.70
90.0	16.62	15.86	14.63	13.40	12.29	12.11	11.94	11.70	11.70
135.0	16.91	16.39	15.51	14.34	13.11	12.35	12.11	11.94	11.76
180.0	17.85	17.32	16.80	16.04	14.86	13.69	12.70	12.23	12.06
225.0	17.38	16.91	16.27	14.86	13.69	12.64	12.23	12.00	11.82
270.0	17.56	17.15	16.62	15.92	14.51	13.17	12.41	12.06	11.88
315.0	16.44	16.04	15.51	14.75	13.75	12.76	12.17	11.94	11.70
360.0	15.74	15.22	14.22	13.23	12.47	12.11	11.88	11.70	11.76

Intensity data(cd)

C/γ(°)	90.0
0.0	11.76
45.0	11.70
90.0	11.70
135.0	11.76
180.0	11.82
225.0	11.70
270.0	11.70
315.0	11.70
360.0	11.76